



South Hill Park | London | NW3

£875 Per Week |



ADN
RESIDENTIAL

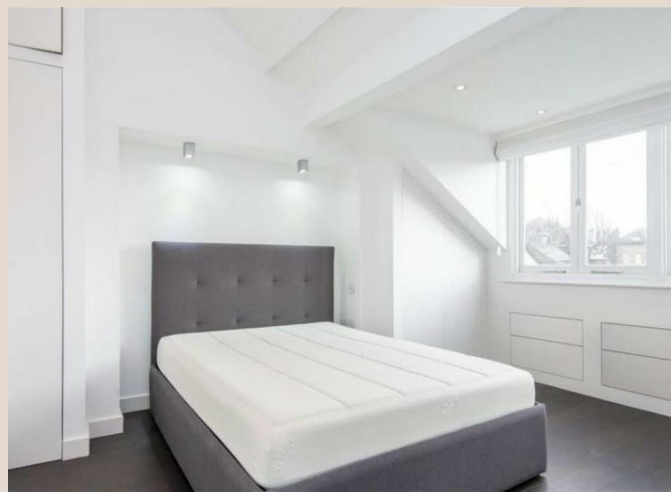
A beautifully presented and bright apartment, ideally positioned moments from the tranquil ponds of Hampstead Heath. The property boasts a well-proportioned double bedroom with fitted wardrobes, a spacious reception room featuring stylish wood flooring, and stunning views overlooking the Heath's ponds.

This impressive home is further complemented by a modern bathroom and a fully fitted kitchen, complete with integrated appliances, air conditioning, and elegant granite work surfaces.

The property is conveniently located approximately 0.9 miles from Belsize Park Underground Station (Northern Line) and just 0.3 miles from Hampstead Heath Overground Station, offering excellent transport links.

-
- One Bedroom
 - Kitchen
 - Air Conditioning
 - Wooden Flooring
 - Reception Room
 - Bathroom
 - Outstanding Views
 - Permit Parking
-

Council Tax Band: E
EPC: C





South Hill Park,
Hampstead, NW3

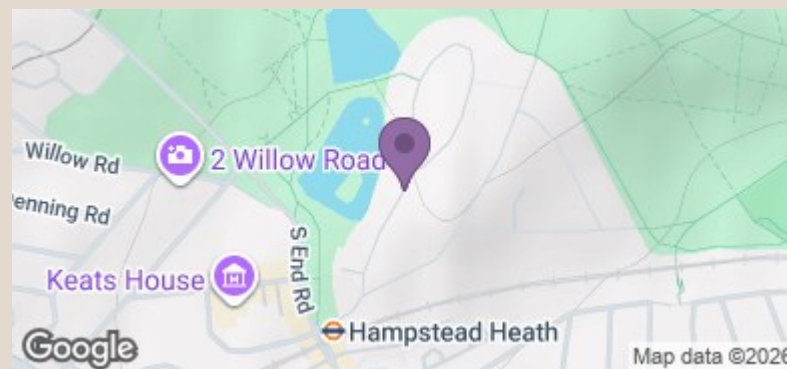


Third Floor

Second Floor

Approx Gross Internal Area 566 Sq Ft - 52.58 Sq M
 Approx Floor Area Including Restricted Heights 731 Sq Ft - 67.91 Sq M
 (Excluding Void)

For Illustration Purposes Only - Not To Scale Floor Plan by www.nogaphotostudio.com Ref: No.51377



Energy Efficiency Rating		Current	Potential
Very energy efficient - lower running costs			
(92 plus)	A		
(81-91)	B		
(69-80)	C		
(55-68)	D		
(39-54)	E		
(21-38)	F		
(1-20)	G		
Not energy efficient - higher running costs			
England & Wales		70	80
EU Directive 2002/91/EC			

info@adnresidential.co.uk | 020 7407 5155